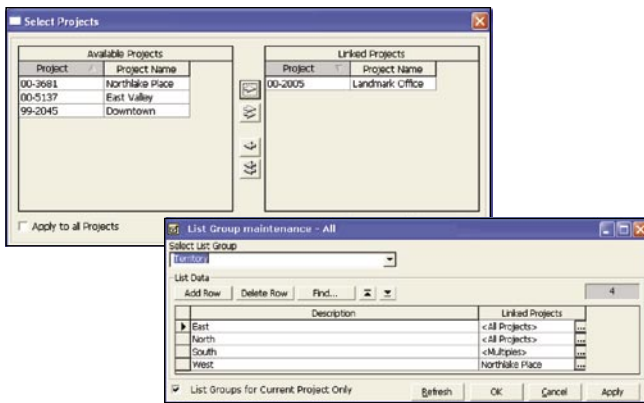




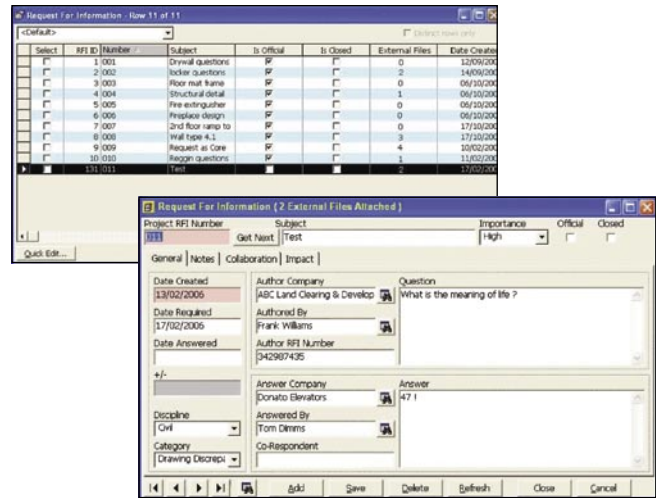
### Project Specific List Groups

Users can now customize List Group Items to be project specific or shared between multiple projects, providing enhanced options in configuration, collection and reporting on project specific data. In addition, granular security has been implemented allowing each specific List Group to have either Full Access or No Access granted to a particular User Group.



### File Attachment Indicator

Users now see a visual indication, in both Data Entry Forms and Register Views, when an external file and/or URL is attached to the record. This allows users to quickly and easily identify records with additional information for access or distribution.



### Increased Quality and Performance Through User Feedback

Meridian continues to learn from its users, and as a result, Prolog 2007 addresses hundreds of customer-reported issues related to database performance, application usability, and report management.

Because our award winning web based project management solution, ProjectTalk®, is based on Prolog, all of the updated features and functionality available in Prolog 2007 will also be available for our ProjectTalk users.

**To learn more about Prolog 2007, please visit [www.meridiansystems.com](http://www.meridiansystems.com) or call (800) 850 2660.**

<sup>1</sup> Statistics excerpted from the 2006 National Construction Technology survey, Constructtech Magazine. <sup>2</sup> CFMA's 2006 Information Technology Survey for the Construction Industry, sixth edition with the permission of the Construction Financial Management Association, Princeton, NJ, (609) 452 8000.